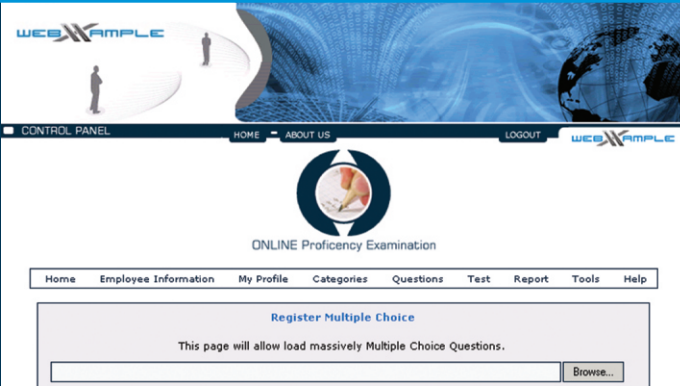


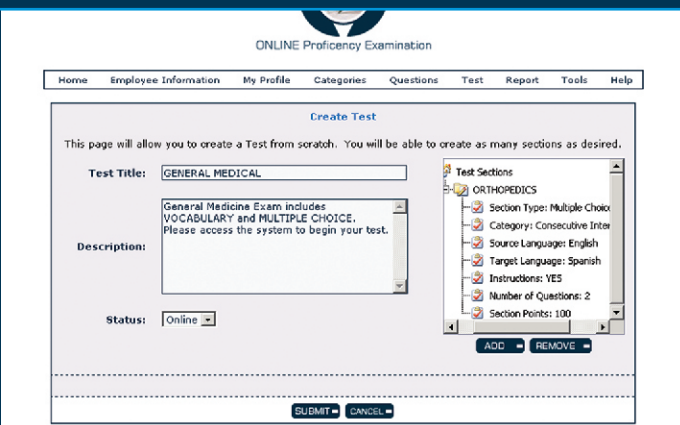
Overview

WebXample introduces the only testing platform with multilingual intelligence. We have developed a system that allows administrators to develop tests and quizzes to quickly determine the proficiency level of employees. Whether you need to test the linguistic level of your staff to designate as interpreters or translators from English to a foreign language in your hospital, and/or test the safety level of your workers in a specific area, either in English and/or their native tongues, to comply with industry standards, OPE is the platform you need.



Features

- Create and search tests
- Add, edit and/or delete categories, questions and sections as needed
- Import tools with multilanguage capability (vocabulary, multiple choice)
- Accepts graphics and sound files (WAV and other formats for listening and comprehension sections)
- Randomly positions test questions to provide an original test for every user
- For the English speaking administrators, test building in multiple languages of choice
- Accepts all types of alphabets (Roman, Cyrillic, Chinese and more)
- Report capabilities for administrators and users to view scores, test dates, and other history



Benefits

- Powerful and fast hosted application
- Secured, password protected and easy to use
- Allows for any number of users
- Provides original tests (all tests are unique)
- Automatic and semi automatic grading
- Cost effective
- Convenient and accessible 24/7

